



**Project:** Retallack 365, Cornwall

**Client:** PRB Ltd

**Project Value:** £7.5M

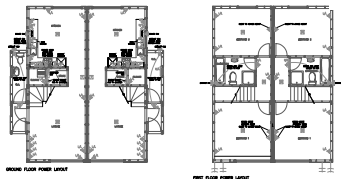
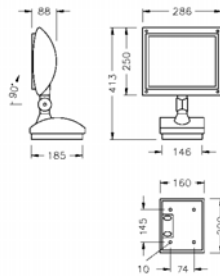
**Services Consultant:** Integr8 Ltd

**Services Value:** £15K

**Contract Duration:** 5 weeks

**Sub Contract Type:** Design Only

**Size:** 1.5 Sq Miles



**Integr8 successfully negotiated; on a consultancy basis, the full design of the M&E installation works to a new build swimming pool & gymnasium complex, along with the design for circa 130 luxury two and four bed wooden holiday chalets/log cabins.** With the works being carried out over two phases; the first being the pool / gym building, 90

*Retallack 365*

of the chalets/cabins & the site wide infrastructure. The second phase comprising the remaining 40 chalets and water features. Integr8 were

responsible for the preparation of a complete set of detailed services specifications and M&E layout drawings detailing quantities, makes and manufacturers for all items of plant and equipment, enabling the client to obtain competitive tenders for the works. In addition Integr8 were employed to liaise direct with the regional statutory authorities with regards to the availability and requirement for the incoming electric and water services. Along with a site wide telecoms/data and Sky TV network system interfaced with a "Hotel" style software package enabling the client to bill individual chalets based on usage etc.